

# Rabbit anti-human BCL2 Polyclonal Antibody

Catalog Number: R16004P

General Information	
<b>Immunogen</b>	A synthetic peptide of human BCL2
<b>IgG type</b>	IgG
<b>Clonality</b>	Polyclonal
<b>Specificity</b>	human BCL2
<b>Applications &amp; dilution</b>	WB 1:500 - 1:2000 IHC 1:50 - 1:100 IF 1:50 - 1:200 IP 1:20 - 1:50
<b>Formulation</b>	PBS with 0.02% sodium azide, 50% glycerol, pH7.3.
<b>Purity</b>	≥95% purity by SDS-PAGE
<b>Storage</b>	Store at -20°C. Avoid freeze / thaw cycles.
<b>Abbreviation:</b> ELISA: Enzyme-linked immunosorbent assay; ITA: immunoturbidimetric assay; IP: immunoprecipitation; IHC: immunohistochemistry; IF: immunofluorescence. WB: western blot; FC: flowcytometry	

## Background

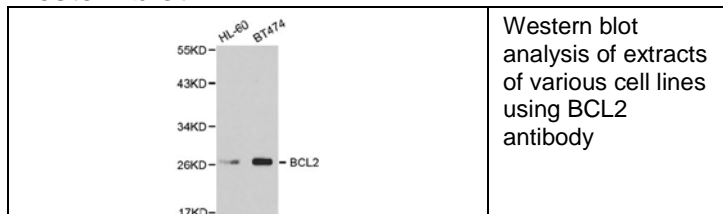
BCL2 exerts a survival function in response to a wide range of apoptotic stimuli through inhibition of mitochondrial cytochrome c release (1). It has been implicated in modulating mitochondrial calcium homeostasis and proton flux (2). Several phosphorylation sites have been identified within BCL2 including Thr56, Ser70, Thr74 and Ser87 (3). It has been suggested that these phosphorylation sites may be targets of the ASK1/MKK7/JNK1 pathway, and that phosphorylation of BCL2 may be a marker for mitotic events (4,5). Mutation of BCL2 at Thr56 or Ser87 inhibits its anti-apoptotic activity during glucocorticoid-induced apoptosis of T lymphocytes (6). Interleukin 3 and JNK-induced BCL2 phosphorylation at Ser70 may be required for its enhanced anti-apoptotic functions (7).

## Preparation

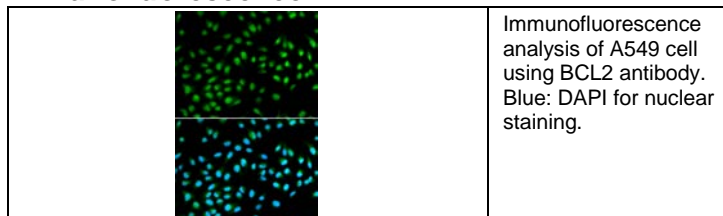
Polyclonal antibody is produced by immunizing rabbit with human BCL2 and purified using protein A resin.

## Applications

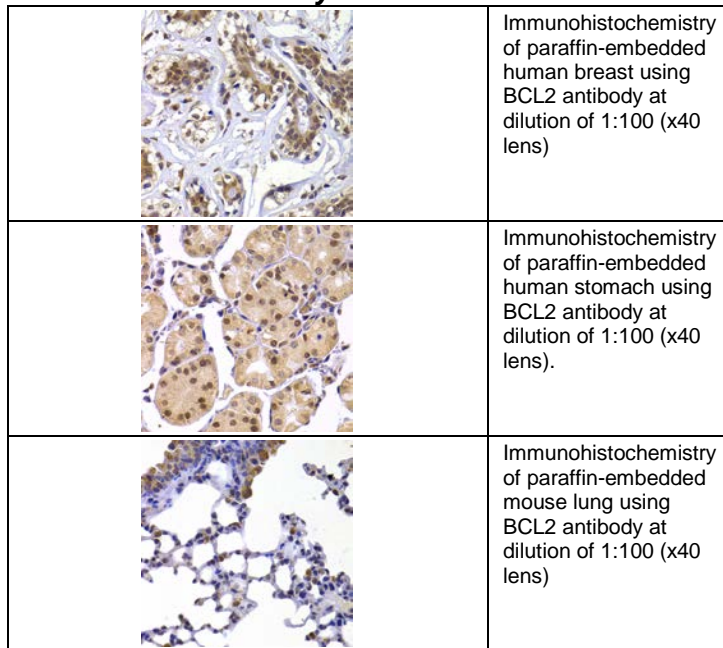
### Western blot



### Immunofluorescence



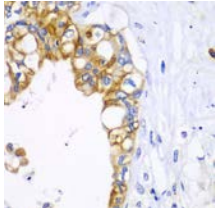
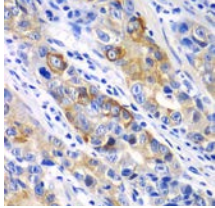
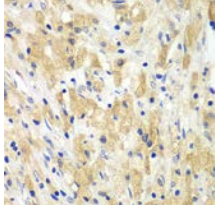
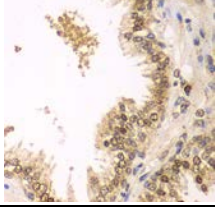
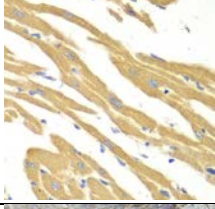
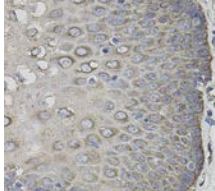
### Immunohistochemistry



**For research use only**

## Rabbit anti-human BCL2 Polyclonal Antibody

Catalog Number: R16004P

	Immunohistochemistry of paraffin-embedded human liver cancer using BCL2 antibody at dilution of 1:100 (x40 lens)
	Immunohistochemistry of paraffin-embedded human gastric cancer using BCL2 antibody at dilution of 1:100 (x40 lens).
	Immunohistochemistry of paraffin-embedded human lung cancer using BCL2 antibody at dilution of 1:100 (x40 lens)
	Immunohistochemistry of paraffin-embedded human prostate using BCL2 antibody at dilution of 1:100 (x40 lens)
	Immunohistochemistry of paraffin-embedded mouse heart using BCL2 antibody at dilution of 1:100 (x40 lens)
	Immunohistochemistry of paraffin-embedded human esophagus using Bcl2 antibody

### Storage

This antibody is shipped at 4 °C. This product is stable for 12 months from date of receipt when stored at -20 °C to -70 °C. Avoid freeze/thaw cycles.

### Hazard/Biohazard

This antibody contains 0.09% sodium azide as preservative. Please handle and dispose the product properly. No known biohazard is associated with this product.

**For research use only**