

Rabbit anti-human CDK1 Polyclonal Antibody

Catalog Number: R16006P

General Information	
Immunogen	A synthetic peptide of human CDK1
IgG type	IgG
Clonality	Polyclonal
Specificity	human CDK1
Applications & dilution	WB 1:500 - 1:2000 IHC 1:50 - 1:100 IF 1:50 - 1:200
Formulation	PBS with 0.02% sodium azide, 50% glycerol, pH7.3.
Purity	≥95% purity by SDS-PAGE
Storage	Store at -20°C. Avoid freeze / thaw cycles.
Abbreviation: ELISA: Enzyme-linked immunosorbent assay; ITA: immunoturbidimetric assay; IP: immunoprecipitation; IHC: immunohistochemistry; IF: immunofluorescence. WB: western blot; FC: flowcytometry	

Background

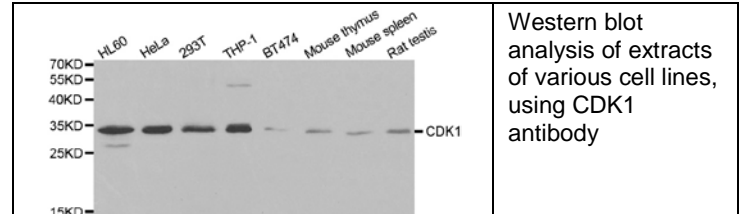
The entry of eukaryotic cells into mitosis is regulated by cdc2 kinase activation, a process controlled at several steps including cyclin binding and phosphorylation of cdc2 at Thr161. However, the critical regulatory step in activating cdc2 during progression into mitosis appears to be dephosphorylation of cdc2 at Thr14 and Tyr15. Phosphorylation at Thr14 and Tyr15, resulting in inhibition of cdc2, can be carried out by Wee1 and Myt1 protein kinases. The cdc25 phosphatase may be responsible for removal of phosphates at Thr14 and Tyr15 and subsequent activation of cdc2.

Preparation

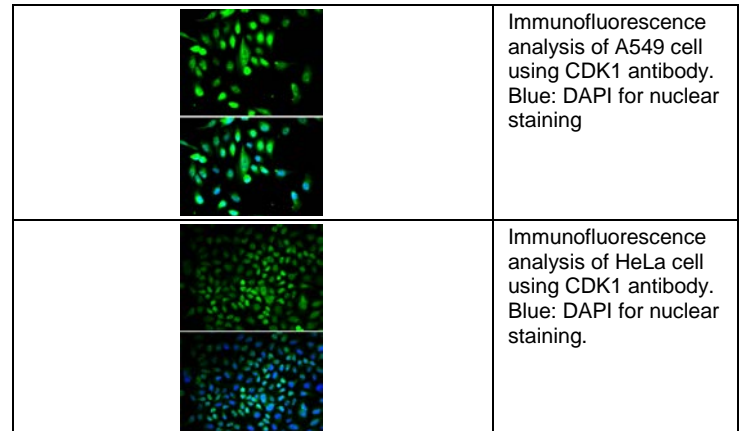
Polyclonal antibody is produced by immunizing rabbit with human CDK1 protein and purified using protein A resin.

Applications

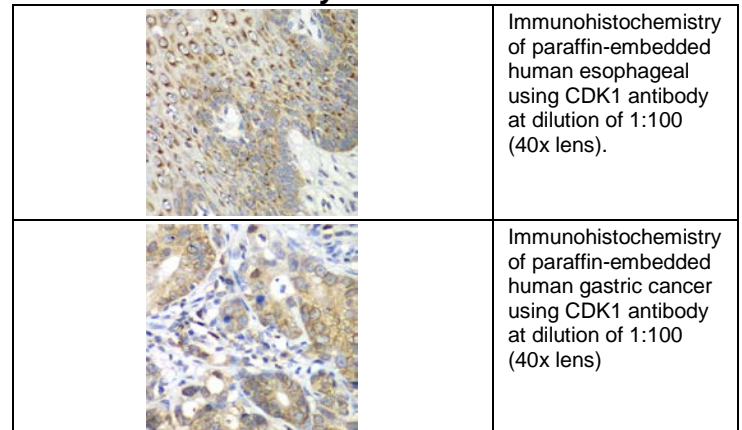
Western blot



Immunofluorescence



Immunohistochemistry

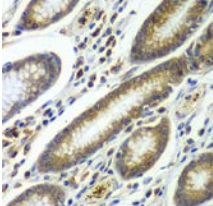
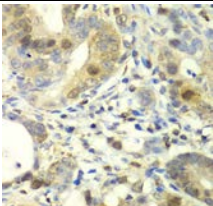
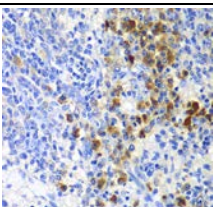
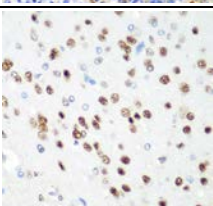
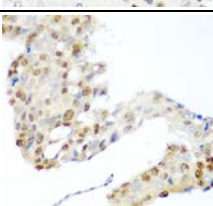


For research use only

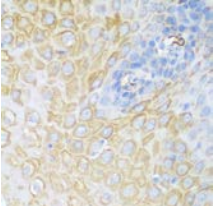
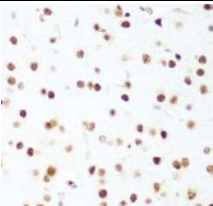
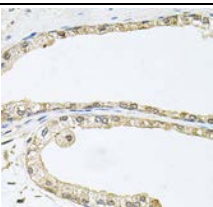
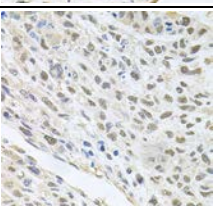
Rabbit anti-human CDK1 Polyclonal Antibody

Catalog Number: R16006P

Immunohistochemistry

	Immunohistochemistry of paraffin-embedded human colon using CDK1 antibody at dilution of 1:100 (40x lens).
	Immunohistochemistry of paraffin-embedded human gastric cancer using CDK1 antibody at dilution of 1:100 (40x lens)
	Immunohistochemistry of paraffin-embedded mouse spleen using CDK1 antibody at dilution of 1:100 (40x lens)
	Immunohistochemistry of paraffin-embedded rat brain using CDK1 antibody at dilution of 1:100 (40x lens)
	Immunohistochemistry of paraffin-embedded human lung cancer using CDK1 antibody at dilution of 1:100 (40x lens)

Immunohistochemistry

	Immunohistochemistry of paraffin-embedded human esophagus using CDK1 antibody at dilution of 1:100 (40x lens)
	Immunohistochemistry of paraffin-embedded mouse brain using CDK1 antibody at dilution of 1:100 (40x lens)
	Immunohistochemistry of paraffin-embedded human prostate using CDK1 antibody at dilution of 1:100 (x40 lens)
	Immunohistochemistry of paraffin-embedded human lung cancer using CDK1 antibody at dilution of 1:100 (x40 lens).

Storage

This antibody is shipped at 4 °C. This product is stable for 12 months from date of receipt when stored at -20 °C to -70 °C. Avoid freeze/thaw cycles.

Hazard/Biohazard

This antibody contains 0.09% sodium azide as preservative. Please handle and dispose the product properly. No known biohazard is associated with this product.

For research use only