

Rabbit anti-human Lamin A/C Polyclonal Antibody

Catalog Number: R16013P

General Information	
Immunogen	Recombinant protein of human Lamin A/C
IgG type	IgG
Clonality	Polyclonal
Specificity	human Lamin A/C
Applications & dilution	WB 1:500 - 1:2000 IHC 1:50 - 1:200 IF 1:50 - 1:200
Formulation	PBS with 0.02% sodium azide, 50% glycerol, pH7.3.
Purity	≥95% purity by SDS-PAGE
Storage	Store at -20°C. Avoid freeze / thaw cycles.
Abbreviation: ELISA: Enzyme-linked immunosorbent assay; ITA: immunoturbidimetric assay; IP: immunoprecipitation; IHC: immunohistochemistry; IF: immunofluorescence. WB: western blot; FC: flowcytometry	

Background

Lamins are nuclear membrane structural components that are important in maintaining normal cell functions such as cell cycle control, DNA replication, and chromatin organization. Lamin A/C is cleaved by caspase-6 and serves as a marker for caspase-6 activation. During apoptosis, lamin A/C is specifically cleaved into a large (41-50 kDa) and a small (28 kDa) fragment. The cleavage of lamins results in nuclear disregulation and cell death.

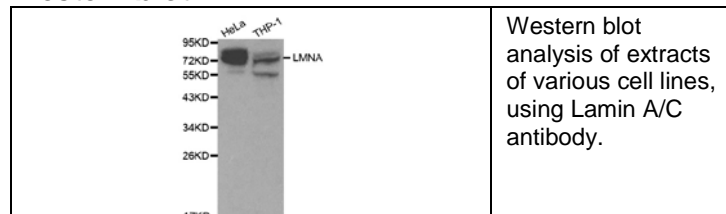
For research use only

Preparation

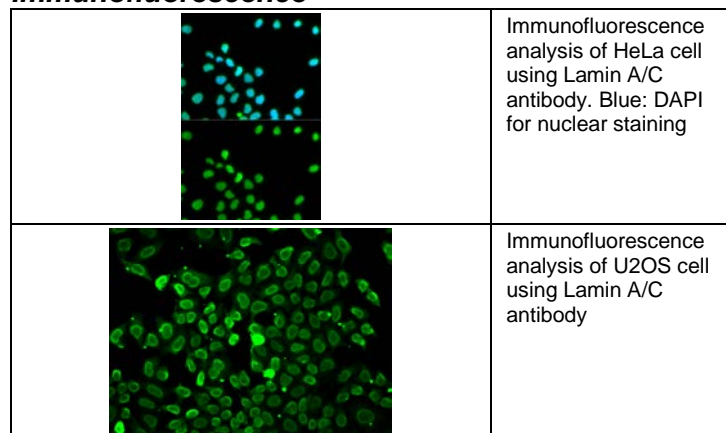
Polyclonal antibody is produced by immunizing rabbit with recombinant protein of human Lamin A/C and purified using protein A resin.

Applications

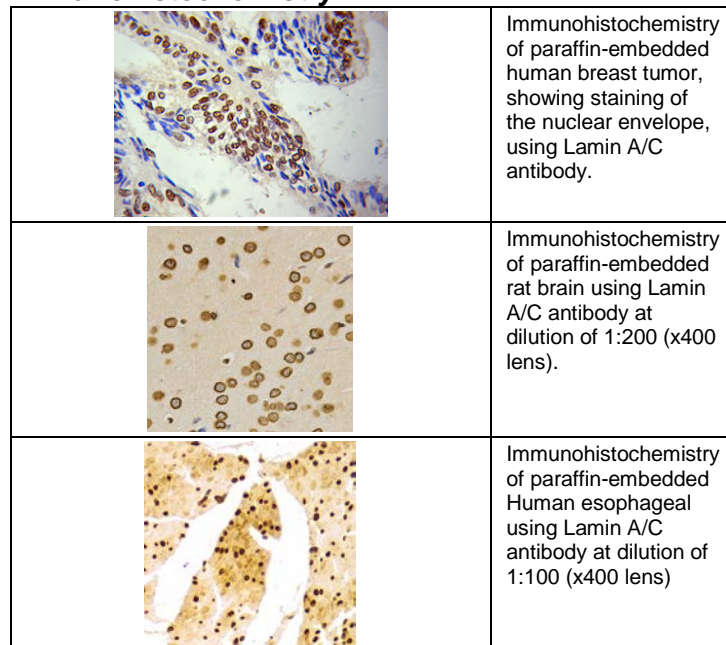
Western blot



Immunofluorescence



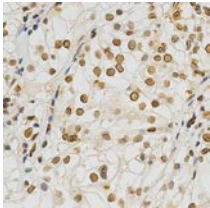
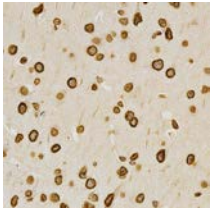
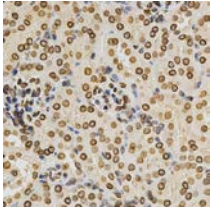
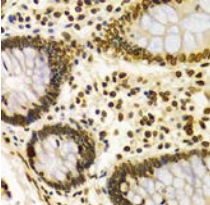
Immunohistochemistry



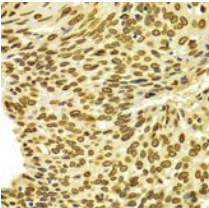
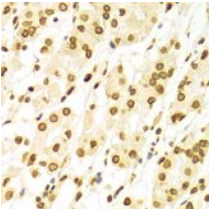
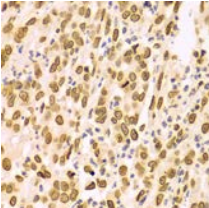
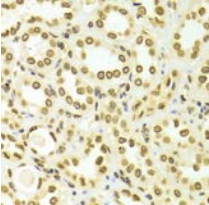
Rabbit anti-human Lamin A/C Polyclonal Antibody

Catalog Number: R16013P

Immunohistochemistry

	Immunohistochemistry of paraffin-embedded human kidney cancer using Lamin A/C antibody at dilution of 1:200 (x400 lens)
	Immunohistochemistry of paraffin-embedded mouse brain using Lamin A/C antibody at dilution of 1:200 (x400 lens)
	Immunohistochemistry of paraffin-embedded mouse kidney using Lamin A/C antibody at dilution of 1:200 (x400 lens)
	Immunohistochemistry of paraffin-embedded Human colon using Lamin A/C antibody at dilution of 1:100 (x400 lens)

Immunohistochemistry

	Immunohistochemistry of paraffin-embedded human esophageal cancer using Lamin A/C antibody at dilution of 1:100 (x400 lens)
	Immunohistochemistry of paraffin-embedded Human gastric using Lamin A/C antibody at dilution of 1:100 (x400 lens)
	Immunohistochemistry of paraffin-embedded Human gastric cancer using Lamin A/C antibody at dilution of 1:100 (x400 lens)
	Immunohistochemistry of paraffin-embedded Human kidney using Lamin A/C antibody at dilution of 1:100 (x400 lens)

Storage

This antibody is shipped at 4 °C. This product is stable for 12 months from date of receipt when stored at -20 °C to -70 °C. Avoid freeze/thaw cycles.

Hazard/Biohazard

This antibody contains 0.09% sodium azide as preservative. Please handle and dispose the product properly. No known biohazard is associated with this product.

For research use only