

Rabbit anti-human PIK3CA Polyclonal Antibody

Catalog Number: R16018P

General Information	
Immunogen	Recombinant protein of human PIK3CA
IgG type	IgG
Clonality	Polyclonal
Specificity	human PIK3CA
Applications & dilution	WB 1:500 - 1:2000 IHC 1:50 - 1:100
Formulation	PBS with 0.02% sodium azide, 50% glycerol, pH7.3.
Purity	≥95% purity by SDS-PAGE
Storage	Store at -20°C. Avoid freeze / thaw cycles.
Abbreviation: ELISA: Enzyme-linked immunosorbent assay; ITA: immunoturbidimetric assay; IP: immunoprecipitation; IHC: immunohistochemistry; IF: immunofluorescence. WB: western blot; FC: flowcytometry	

Background

PIK3CA belongs to the PI3/PI4-kinase family. It phosphorylates PtdIns, PtdIns4P and PtdIns(4,5)P2 with a preference for PtdIns(4,5)P2. Defects in PIK3CA are associated with colorectal cancer (CRC). Defects in PIK3CA are associated with breast cancer. Defects in PIK3CA are associated with ovarian cancer. Defects in PIK3CA may underlie hepatocellular carcinoma (HCC). Defects in PIK3CA are a cause of keratosis seborrheic (KERSEB). The antibody is specific to PIK3CA.

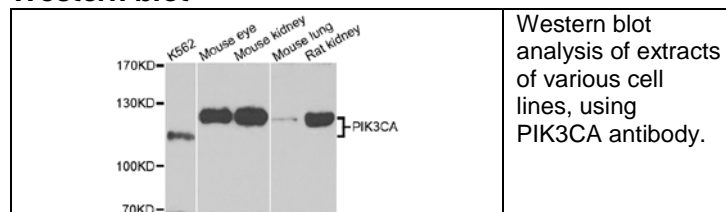
For research use only

Preparation

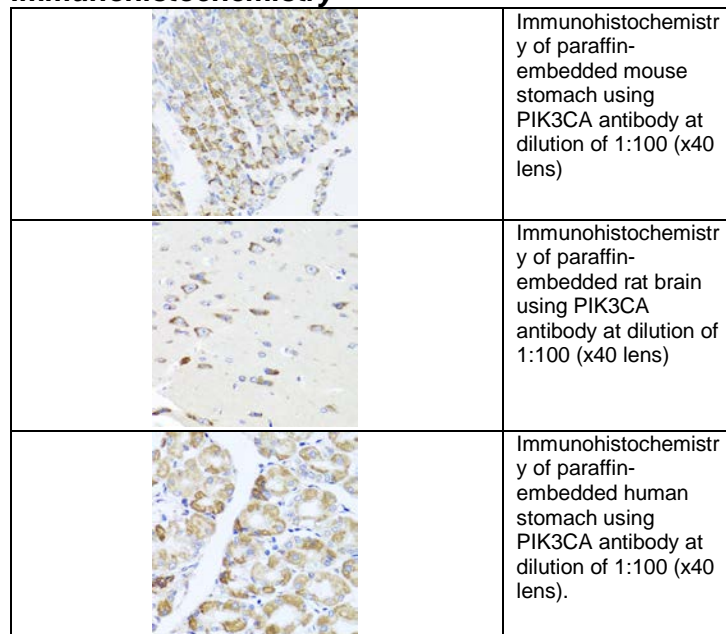
Polyclonal antibody is produced by immunizing rabbit with recombinant protein of human PIK3CA and purified using protein A resin.

Applications

Western blot



Immunohistochemistry



Storage

This antibody is shipped at 4 °C. This product is stable for 12 months from date of receipt when stored at -20 °C to -70 °C. Avoid freeze/thaw cycles.

Hazard/Biohazard

This antibody contains 0.02% sodium azide as preservative. Please handle and dispose the product properly. No known biohazard is associated with this product.