

Rabbit anti-human CDH1 Polyclonal Antibody

Catalog Number: R16021P

General Information	
Immunogen	A synthetic peptide of human CDH1
IgG type	IgG
Clonality	Polyclonal
Specificity	human CDH1
Applications & dilution	WB 1:500 - 1:2000 ICC 1:50 - 1:200
Formulation	PBS with 0.02% sodium azide, 50% glycerol, pH7.3.
Purity	≥95% purity by SDS-PAGE
Storage	Store at -20°C. Avoid freeze / thaw cycles.
Abbreviation: ELISA: Enzyme-linked immunosorbent assay; ITA: immunoturbidimetric assay; IP: immunoprecipitation; IHC: immunohistochemistry; IF: immunofluorescence. WB: western blot; FC: flowcytometry	

Background

This gene is a classical cadherin from the cadherin superfamily. The encoded protein is a calcium dependent cell-cell adhesion glycoprotein comprised of five extracellular cadherin repeats, a transmembrane region and a highly conserved cytoplasmic tail. Mutations in this gene are correlated with gastric, breast, colorectal, thyroid and ovarian cancer. Loss of function is thought to contribute to progression in cancer by increasing proliferation, invasion, and/or metastasis. The ectodomain of this protein mediates bacterial adhesion to mammalian cells and the cytoplasmic domain is required for internalization. Identified transcript variants arise from mutation at consensus splice sites.

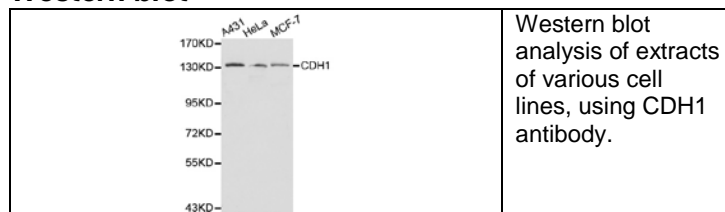
For research use only

Preparation

Polyclonal antibody is produced by immunizing rabbit with a synthetic peptide of human CDH1 and purified using protein A resin.

Applications

Western blot



Storage

This antibody is shipped at 4 °C. This product is stable for 12 months from date of receipt when stored at -20 °C to -70 °C. Avoid freeze/thaw cycles.

Hazard/Biohazard

This antibody contains 0.02% sodium azide as preservative. Please handle and dispose the product properly. No known biohazard is associated with this product.