

Rabbit anti-human CTNNB1 Polyclonal Antibody

Catalog Number: R16022P

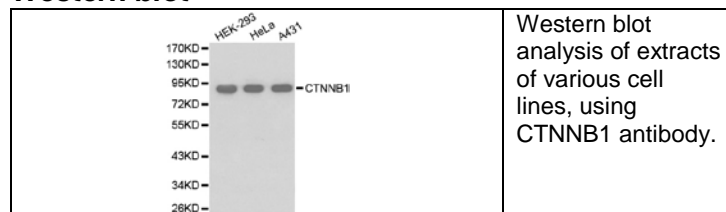
General Information	
Immunogen	A synthetic peptide of human CTNNB1
IgG type	IgG
Clonality	Polyclonal
Specificity	human CTNNB1
Applications & dilution	WB 1:500 - 1:2000 IHC 1:50 - 1:200 ICC 1:50 - 1:200 IP 1:20 - 1:50
Formulation	PBS with 0.02% sodium azide, 50% glycerol, pH7.3.
Purity	≥95% purity by SDS-PAGE
Storage	Store at -20°C. Avoid freeze / thaw cycles.
Abbreviation: ELISA: Enzyme-linked immunosorbent assay; ITA: immunoturbidimetric assay; IP: immunoprecipitation; IHC: immunohistochemistry; IF: immunofluorescence. WB: western blot; FC: flowcytometry	

Preparation

Polyclonal antibody is produced by immunizing rabbit with a synthetic peptide of human CTNNB1 and purified using protein A resin.

Applications

Western blot



Background

β -catenin is a key downstream effector in the Wnt signaling pathway. It is implicated in two major biological processes in vertebrates: early embryonic development and tumorigenesis. CK1 phosphorylates β -catenin at Ser45. This phosphorylation event primes β -catenin for subsequent phosphorylation by GSK-3. GSK-3 β destabilizes β -catenin by phosphorylating it at Ser33, Ser37, and Thr41. Mutations at these sites result in the stabilization of β -catenin protein levels and have been found in many tumor cell lines.

Storage

This antibody is shipped at 4 °C. This product is stable for 12 months from date of receipt when stored at -20 °C to -70 °C. Avoid freeze/thaw cycles.

Hazard/Biohazard

This antibody contains 0.02% sodium azide as preservative. Please handle and dispose the product properly. No known biohazard is associated with this product.

For research use only