

Rabbit anti-human CXCR4 Polyclonal Antibody

Catalog Number: R16030P

General Information	
Immunogen	A synthetic peptide of human CXCR4
IgG type	IgG
Clonality	Polyclonal
Specificity	human CXCR4
Applications & dilution	WB 1:500 - 1:1000 IHC 1:50 - 1:100
Formulation	PBS with 0.02% sodium azide, 50% glycerol, pH7.3.
Purity	≥95% purity by SDS-PAGE
Storage	Store at -20°C. Avoid freeze / thaw cycles.
Abbreviation: ELISA: Enzyme-linked immunosorbent assay; ITA: immunoturbidimetric assay; IP: immunoprecipitation; IHC: immunohistochemistry; IF: immunofluorescence. WB: western blot; FC: flowcytometry	

Background

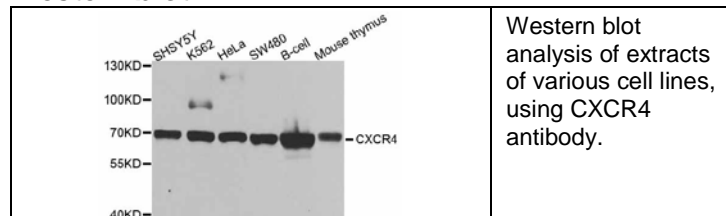
This gene encodes a CXC chemokine receptor specific for stromal cell-derived factor-1. The protein has 7 transmembrane regions and is located on the cell surface. It acts with the CD4 protein to support HIV entry into cells and is also highly expressed in breast cancer cells. Mutations in this gene have been associated with WHIM (warts, hypogammaglobulinemia, infections, and myelokathexis) syndrome. Alternate transcriptional splice variants, encoding different isoforms, have been characterized.

Preparation

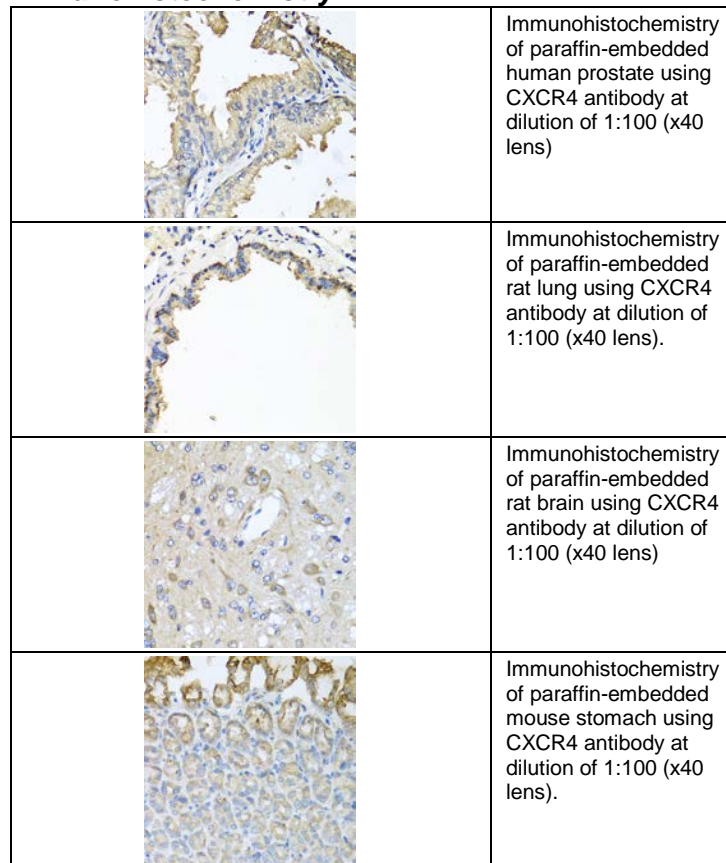
Polyclonal antibody is produced by immunizing rabbit with a synthetic peptide of human CXCR4 and purified using protein A resin.

Applications

Western blot



Immunohistochemistry



For research use only

Storage

This antibody is shipped at 4 °C. This product is stable for 12 months from date of receipt when stored at -20 °C to -70 °C. Avoid freeze/thaw cycles.

Hazard/Biohazard

This antibody contains 0.02% sodium azide as preservative. Please handle and dispose the product properly. No known biohazard is associated with this product.

For research use only