

Rabbit anti-human PRMT5 Polyclonal Antibody

Catalog Number: R16031P

General Information	
Immunogen	A synthetic peptide of human PRMT5
IgG type	IgG
Clonality	Polyclonal
Specificity	human PRMT5
Applications & dilution	WB 1:500 - 1:2000 IHC 1:50 - 1:100 IF 1:50 - 1:200 IP 1:50 - 1:200 ChIP 1:20 - 1:100
Formulation	PBS with 0.02% sodium azide, 50% glycerol, pH7.3.
Purity	≥95% purity by SDS-PAGE
Storage	Store at -20°C. Avoid freeze / thaw cycles.
Abbreviation: ELISA: Enzyme-linked immunosorbent assay; ITA: immunoturbidimetric assay; IP: immunoprecipitation; IHC: immunohistochemistry; IF: immunofluorescence. WB: western blot; FC: flowcytometry	

Background

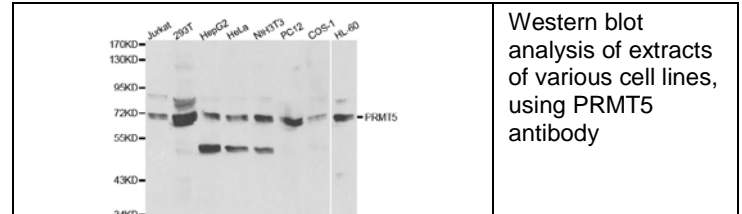
Human Skb1Hs methyltransferase (also called JBP1), a homologue of yeast protein Skb1 and Hsl7p, is composed of 637 amino acid residues and contains motifs conserved among protein methyltransferases. It methylates histones and MBP in vitro. Yeast Hsl7p is involved in regulation of cell cycle progression through G2 by negatively regulating Swe1p, a protein tyrosine kinase that phosphorylates and inhibits Cdc28p. An Hsl7p homologue, Skb1, was identified in fission yeast by virtue of its yeast two-hybrid interaction with Shk1p, a p21 (cdc42p/Rac) activated kinase (PAK). Both proteins belong to the protein methyltransferase superfamily. Interestingly, human Skb1Hs methyltransferase was shown to interact with Jak kinases. This suggests the possibility that the Skb1Hs methyltransferase could link Jak to a PAK signaling pathway in mammalian cells.

Preparation

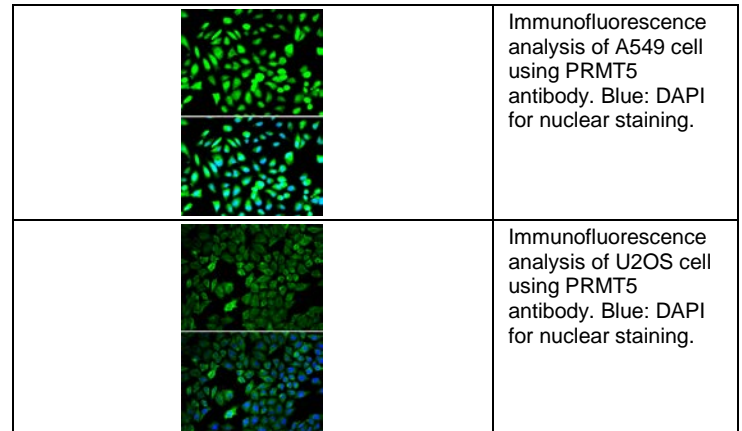
Polyclonal antibody is produced by immunizing rabbit with a synthetic peptide of human PRMT5 and purified using protein A resin.

Applications

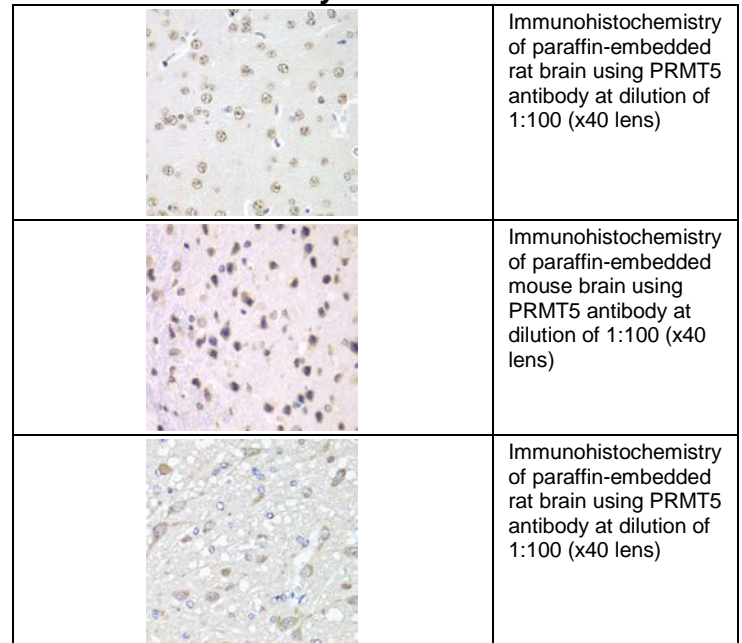
Western blot



Immunofluorescence



Immunohistochemistry

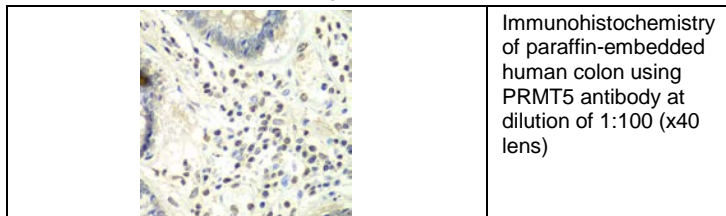


For research use only

Rabbit anti-human PRMT5 Polyclonal Antibody

Catalog Number: R16031P

Immunohistochemistry



Storage

This antibody is shipped at 4 °C. This product is stable for 12 months from date of receipt when stored at -20 °C to -70 °C. Avoid freeze/thaw cycles.

Hazard/Biohazard

This antibody contains 0.09% sodium azide as preservative. Please handle and dispose the product properly. No known biohazard is associated with this product.

For research use only