

# Rabbit anti-human EZH2 Polyclonal Antibody

Catalog Number: R16059P

## General Information

<b>Immunogen</b>	Recombinant protein of human EZH2
<b>IgG type</b>	IgG
<b>Clonality</b>	Polyclonal
<b>Specificity</b>	Human EZH2
<b>Applications &amp; dilution</b>	WB 1:500 - 1:2000 IHC 1:50 - 1:200 IF 1:20 - 1:100
<b>Formulation</b>	PBS with 0.02% sodium azide, 50% glycerol, pH7.3.
<b>Purity</b>	≥95% purity by SDS-PAGE
<b>Storage</b>	Store at -20°C. Avoid freeze / thaw cycles.
<b>Abbreviation:</b> ELISA: Enzyme-linked immunosorbent assay; ITA: immunoturbidimetric assay; IP: immunoprecipitation; IHC: immunohistochemistry; IF: immunofluorescence. WB: western blot; FC: flowcytometry	

## Background

This gene encodes a member of the Polycomb-group (PcG) family. PcG family members form multimeric protein complexes, which are involved in maintaining the transcriptional repressive state of genes over successive cell generations. This protein associates with the embryonic ectoderm development protein, the VAV1 oncoprotein, and the X-linked nuclear protein. This protein may play a role in the hematopoietic and central nervous systems. Multiple alternatively spliced transcript variants encoding distinct isoforms have been identified for this gene.

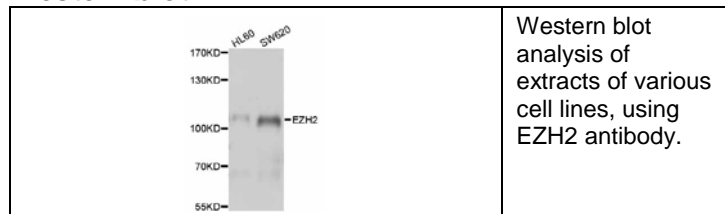
**For research use only**

## Preparation

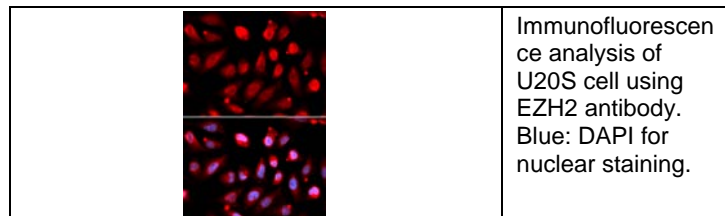
Polyclonal antibody is produced by immunizing rabbit with recombinant protein of human EZH2 and purified using protein A resin.

## Applications

### Western blot



### Immunofluorescence



## Storage

This antibody is shipped at 4 °C. This product is stable for 12 months from date of receipt when stored at -20 °C to -70 °C. Avoid freeze/thaw cycles.

## Hazard/Biohazard

This antibody contains 0.02% sodium azide as preservative. Please handle and dispose the product properly. No known biohazard is associated with this product.