

Rabbit anti-human WBSR22 Polyclonal Antibody

Catalog Number: R16069P

General Information	
Immunogen	Recombinant protein of human WBSR22
IgG type	IgG
Clonality	Polyclonal
Specificity	human WBSR22
Applications & dilution	WB 1:500 - 1:2000 IHC 1:50 - 1:200 IF 1:50 - 1:100
Formulation	PBS with 0.02% sodium azide, 50% glycerol, pH7.3.
Purity	≥95% purity by SDS-PAGE
Storage	Store at -20°C. Avoid freeze / thaw cycles.
Abbreviation: ELISA: Enzyme-linked immunosorbent assay; ITA: immunoturbidimetric assay; IP: immunoprecipitation; IHC: immunohistochemistry; IF: immunofluorescence. WB: western blot; FC: flowcytometry	

Background

This gene encodes a protein containing a nuclear localization signal and an S-adenosyl-L-methionine binding motif typical of methyltransferases, suggesting that the encoded protein may act on DNA methylation. This gene is deleted in Williams syndrome, a multisystem developmental disorder caused by the deletion of contiguous genes at 7q11.23. Alternatively spliced transcript variants have been found.

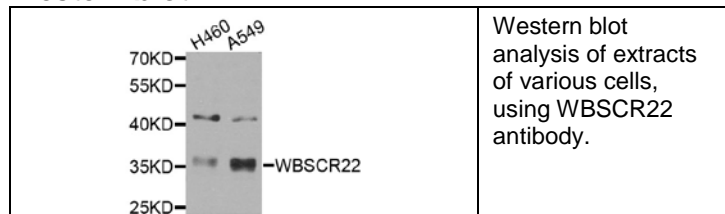
For research use only

Preparation

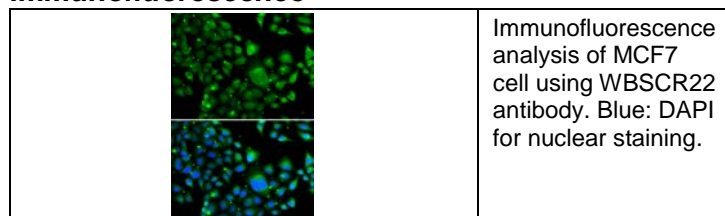
Polyclonal antibody is produced by immunizing rabbit with recombinant protein of human WBSR22 and purified using protein A resin.

Applications

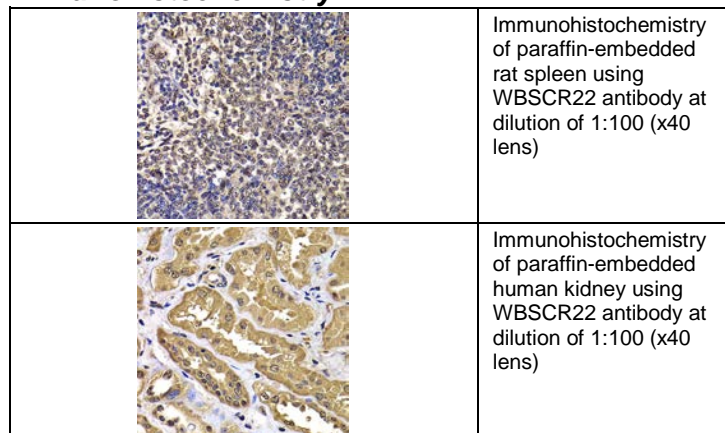
Western blot



Immunofluorescence



Immunohistochemistry



Storage

This antibody is shipped at 4 °C. This product is stable for 12 months from date of receipt when stored at -20 °C to -70 °C. Avoid freeze/thaw cycles.

Hazard/Biohazard

This antibody contains 0.02% sodium azide as preservative. Please handle and dispose the product properly. No known biohazard is associated with this product.