

Rabbit anti-human alpha Tubulin Polyclonal Antibody

Catalog Number: R16070P

General Information

Immunogen	Recombinant protein of human α -TUBULIN
IgG type	IgG
Clonality	Polyclonal
Specificity	human α -TUBULIN
Applications & dilution	WB 1:500 - 1:2000 IHC 1:50 - 1:200 IF 1:20 - 1:100 IP 1:20 - 1:50 FC 1:20 - 1:50
Formulation	PBS with 0.02% sodium azide, 50% glycerol, pH7.3.
Purity	\geq 95% purity by SDS-PAGE
Storage	Store at -20°C. Avoid freeze / thaw cycles.

Abbreviation:

ELISA: Enzyme-linked immunosorbent assay; ITA: immunoturbidimetric assay; IP: immunoprecipitation; IHC: immunohistochemistry; IF: immunofluorescence. WB: western blot; FC: flowcytometry

Background

There are five tubulins in human cells: alpha, beta, gamma, delta, and epsilon. Tubulins are conserved across species. They form heterodimers, which multimerize to form a microtubule filament. An alpha and beta tubulin heterodimer is the basic structural unit of microtubules. The heterodimer does not come apart, once formed. The alpha and beta tubulins, which are each about 55 kDa MW, are homologous but not identical. Alpha, beta, and gamma tubulins have all been used as loading controls. Tubulin expression may vary according to resistance to antimicrobial and antimitotic drugs.

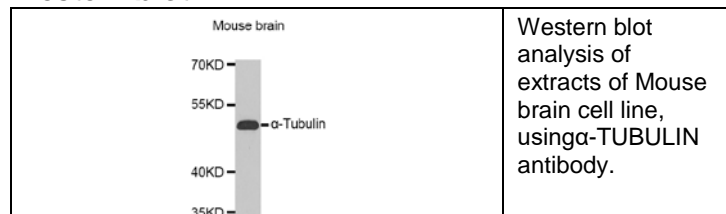
For research use only

Preparation

Polyclonal antibody is produced by immunizing rabbit with recombinant protein of human α -TUBULIN and purified using protein A resin.

Applications

Western blot



Storage

This antibody is shipped at 4 °C. This product is stable for 12 months from date of receipt when stored at -20 °C to -70 °C. Avoid freeze/thaw cycles.

Hazard/Biohazard

This antibody contains 0.02% sodium azide as preservative. Please handle and dispose the product properly. No known biohazard is associated with this product.