

# Rabbit anti-human PCNA Polyclonal Antibody

Catalog Number: R16072P

## General Information

<b>Immunogen</b>	Recombinant protein of human PCNA
<b>IgG type</b>	IgG
<b>Clonality</b>	Polyclonal
<b>Specificity</b>	human PCNA
<b>Applications &amp; dilution</b>	WB 1:500 - 1:2000 IHC 1:50 - 1:200 IF 1:20 - 1:50 IP 1:20 - 1:50
<b>Formulation</b>	PBS with 0.02% sodium azide, 50% glycerol, pH7.3.
<b>Purity</b>	≥95% purity by SDS-PAGE
<b>Storage</b>	Store at -20°C. Avoid freeze / thaw cycles.

### Abbreviation:

ELISA: Enzyme-linked immunosorbent assay; ITA: immunoturbidimetric assay; IP: immunoprecipitation; IHC: immunohistochemistry; IF: immunofluorescence. WB: western blot; FC: flowcytometry

## Background

Proliferating cell nuclear antigen (PCNA) is a member of the DNA sliding clamp family of proteins that assist in DNA replication (1). Crystal structure data suggests that a PCNA homotrimer ring can encircle and slide along the DNA double helix (2). Multiple proteins involved in DNA replication, DNA repair, and cell cycle control bind to PCNA rather than directly associating with DNA, thus facilitating fast processing of DNA (reviewed in 3). PCNA protein expression is a well-accepted marker of proliferation and PCNA (PC10) Mouse mAb has been used to assess PCNA levels in hundreds of scientific studies.

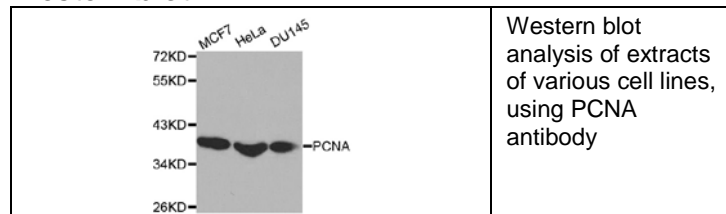
**For research use only**

## Preparation

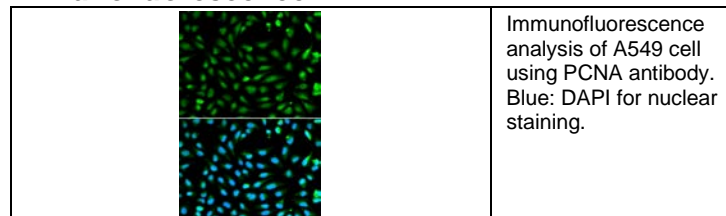
Polyclonal antibody is produced by immunizing rabbit with recombinant protein of human PCNA and purified using protein A resin.

## Applications

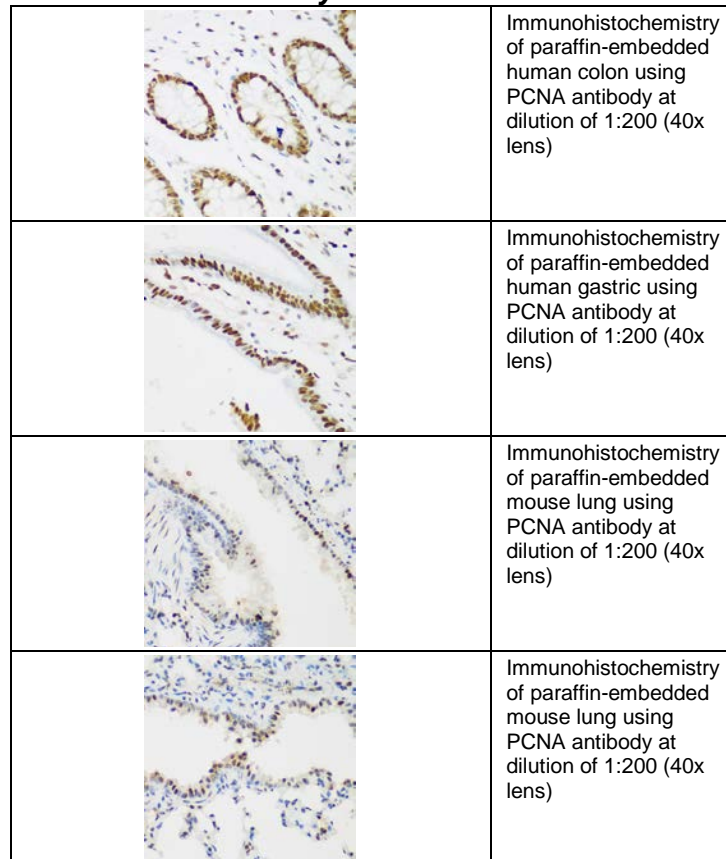
### Western blot



### Immunofluorescence



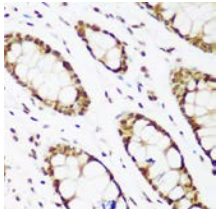
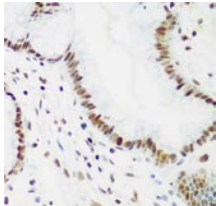
### Immunohistochemistry



## Rabbit anti-human PCNA Polyclonal Antibody

Catalog Number: R16072P

### *Immunohistochemistry*

	Immunohistochemistry of paraffin-embedded human colon using PCNA antibody at dilution of 1:200 (40x lens).
	Immunohistochemistry of paraffin-embedded human gastric using PCNA antibody at dilution of 1:200 (40x lens).

### **Storage**

This antibody is shipped at 4 °C. This product is stable for 12 months from date of receipt when stored at -20 °C to -70 °C. Avoid freeze/thaw cycles.

### **Hazard/Biohazard**

This antibody contains 0.02% sodium azide as preservative. Please handle and dispose the product properly. No known biohazard is associated with this product.

**For research use only**