

Rabbit anti-human LMNB1 Polyclonal Antibody

Catalog Number: R16073P

General Information

Immunogen	Recombinant protein of human LMNB1
IgG type	IgG
Clonality	Polyclonal
Specificity	human LMNB1
Applications & dilution	WB 1:500 - 1:2000 IHC 1:50 - 1:200 IF 1:50 - 1:200
Formulation	PBS with 0.02% sodium azide, 50% glycerol, pH7.3.
Purity	≥95% purity by SDS-PAGE
Storage	Store at -20°C. Avoid freeze / thaw cycles.
Abbreviation: ELISA: Enzyme-linked immunosorbent assay; ITA: immunoturbidimetric assay; IP: immunoprecipitation; IHC: immunohistochemistry; IF: immunofluorescence. WB: western blot; FC: flowcytometry	

Background

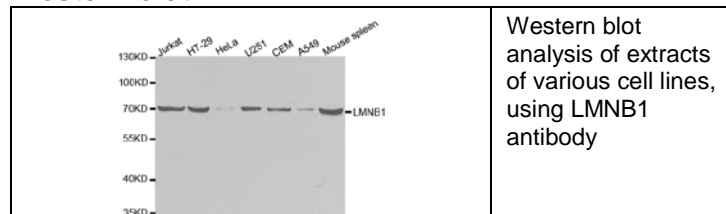
The nuclear lamina consists of a two-dimensional matrix of proteins located next to the inner nuclear membrane. The lamin family of proteins make up the matrix and are highly conserved in evolution. During mitosis, the lamina matrix is reversibly disassembled as the lamin proteins are phosphorylated. Lamin proteins are thought to be involved in nuclear stability, chromatin structure and gene expression. Vertebrate lamins consist of two types, A and B. This gene encodes one of the two B type proteins, B1. Alternative splicing results in transcript variants and a duplication of this gene is associated with autosomal dominant adult-onset leukodystrophy (ADLD).

Preparation

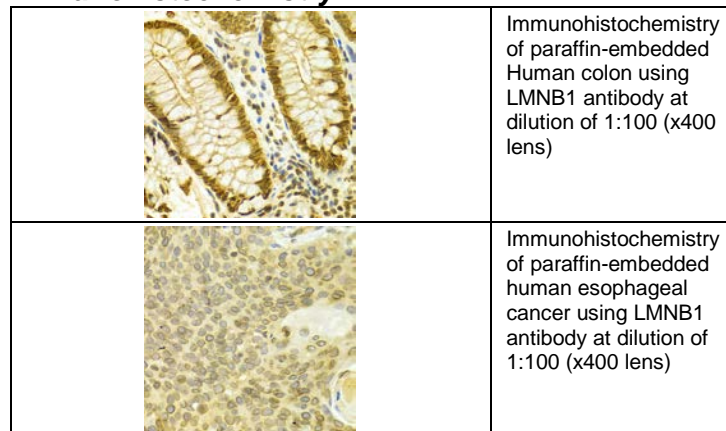
Polyclonal antibody is produced by immunizing rabbit with recombinant protein of human LMNB1 and purified using protein A resin.

Applications

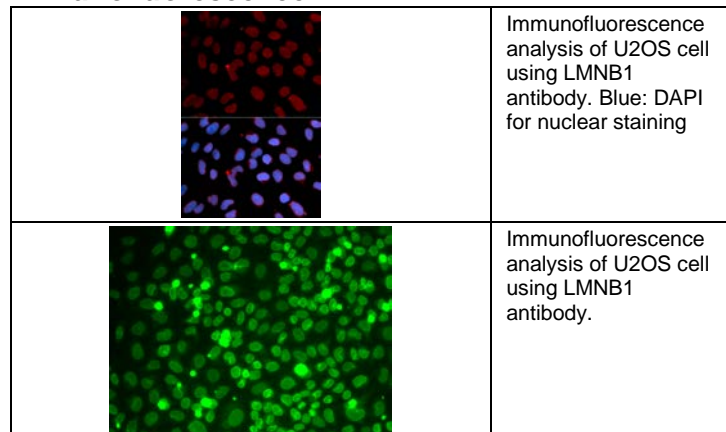
Western blot



Immunohistochemistry



Immunofluorescence

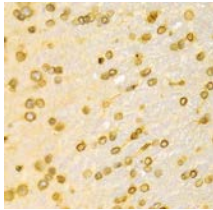
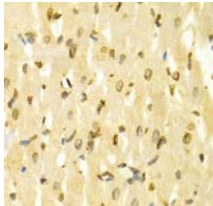


For research use only

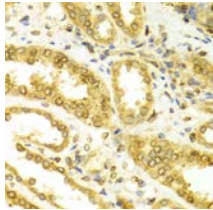
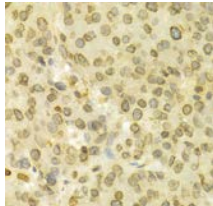
Rabbit anti-human LMNB1 Polyclonal Antibody

Catalog Number: R16073P

Immunohistochemistry

	Immunohistochemistry of paraffin-embedded Rat brain using LMNB1 antibody at dilution of 1:100 (x400 lens).
	Immunohistochemistry of paraffin-embedded Rat heart using LMNB1 antibody at dilution of 1:100 (x400 lens).

Immunohistochemistry

	Immunohistochemistry of paraffin-embedded Human kidney using LMNB1 antibody at dilution of 1:100 (x400 lens)
	Immunohistochemistry of paraffin-embedded liver cancer using LMNB1 antibody at dilution of 1:100 (x400 lens)

Storage

This antibody is shipped at 4 °C. This product is stable for 12 months from date of receipt when stored at -20 °C to -70 °C. Avoid freeze/thaw cycles.

Hazard/Biohazard

This antibody contains 0.09% sodium azide as preservative. Please handle and dispose the product properly. No known biohazard is associated with this product.

For research use only