

## Rabbit Anti-human Interleukin 2 (IL-2)

### Monoclonal Antibody, clone 8G8

Catalog Number: R17003M8G8

### General Information

<b>Immunogen</b>	Full length recombinant human IL-2 protein
<b>IgG type</b>	Rabbit IgG
<b>Clonality</b>	Monoclonal
<b>Applications</b>	ELISA (paired with R17003M2H5); FC (1:200 to 1:2000)
<b>Specificity</b>	Human IL-2
<b>Formulation</b>	0.22 $\mu$ M filtered solution of PBS, pH 7.4
<b>Purity</b>	> 95% determined by SDS-PAGE
<b>Storage</b>	$\leq -20$ °C for 1 year or 4 °C for 1 months

#### Abbreviations:

ELISA: Enzyme-linked immunosorbent assay; ITA: immunoturbidimetric assay; IP: immunoprecipitation; IHC: immuno-histochemistry; IF: immunofluorescence. WB: western blot;

### Storage

This antibody is shipped at 4 °C. This product is stable for 12 months from date of receipt when stored at -20 °C to -70 °C. Avoid freeze/thaw cycles.

### Hazard/Biohazard

This antibody contains 0.09% sodium azide as preservative. Please handle and dispose the product properly. No known biohazard is associated with this product.

### Background

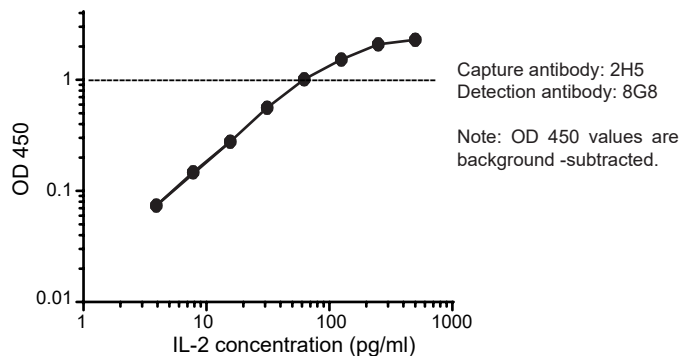
Interleukin 2 (IL-2) is an essential cytokine for the immune system to maintain its key functions in immunity and immune tolerance in response to antigenic and mitogenic stimuli. IL-2 precursor is a 153 amino acid protein which matures into a 133 amino acid. When binds to IL-2 receptors, IL-2 could regulate T cell function by promoting differentiation of immature T cells to regulatory T cells, effector T cells, memory T cells. IL-2 can also regulate the proliferation and differentiation of B cells. IL-2 has been associated with ulcerative colitis-like disease, Capillary Leak Syndrome, and renal carcinoma cancer.

### Preparation

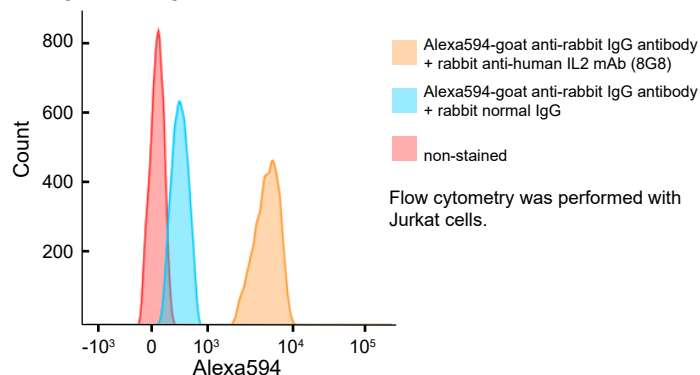
Monoclonal antibody is produced by immunizing rabbit with full length human IL-2 and purified using protein A resin.

### Application

#### Sandwich ELISA



#### Flow cytometry



### Research Use or Manufacturing Only